



DORMOBILE LAND ROVER REPLACEMENT ROOF CANOPIES

GENERAL NOTES REGARDING FITTING REPLACEMENT

PLEASE READ BEFORE BEGINNING TO FIT YOUR CANOPY

CANOPIES CAN NOT BE FITTED STARTING WITH THE ROOF CAP ON THE VEHICLE

- 1 IF YOU HAVE PURCHASED A ROOF KIT FROM US THE ROOF CAP WILL BE MARKED FOR FITTING THE CANOPY. IF WE HAVE SUPPLIED YOUR NEW CANOPY LOOK FOR THE MARKINGS TO GUIDE YOUR FITTING OF THE CANOPY INTO THE CAP**

- 2 ALWAYS FIT NEW CANOPY TO ROOF CAP FIRST, CORNERS THEN SIDES AND ENDS. THE CANOPY HAS BEEN MADE TO ALLOW FOR WASTE AROUND EDGE OF ALLOY STRIPS. REMEMBER THAT THE ALLOY STRIPS GO ON TOP OF THE CANOPY MATERIAL I.E NOT INSIDE THE CANOPY.**

- 3 VELCRO STRAPS FOR THE CANOPY HOOPS HAVE BEEN USED INSTEAD OF PRESS STUDS. ARRANGE HOOPS TO ACHIEVE BEST SHAPE, TAPE THE HOOPS INTO POSITION USING MASKING TAPE THEN RIVET STRAPS ALWAYS WITH THE SOFT VELCRO TO THE TOP. WHEN EVERYTHING OK SHORTEN THE STRAPS . THE CANOPY IS MARKED ON THE OUTSIDE (THIS APPLIES TO CANDY STRIP CANOPIES) OR THE INSIDE WITH THE ORIGINAL POSITIONS FOR THE STRAPS - USE THIS AS A GUIDE TO POSITION YOUR HOOPS TO OBTAIN THE BEST SHAPE.**

18 PREMIER WAY, ABBEY PARK IND. ESTATE, ROMSEY, HAMPSHIRE.
SO51 9DQ

Telephone 44(0) 1794 830831

Fax 44(0) 1794 830839

Registration No. 1391731

e - mail: Dormobile@tiscali.co.uk

Website: www.dormobile.co.uk

VAT No. 320 5672 82

- 4 **FIXING THE CANOPY WITH ORIGINAL BRASS SCREWS AND NUTS AND BOLTS IS OK BUT IF YOU USE AN AIR RIVET GUN AND SEALED POP RIVETS (4.8MM X 18MM) PLACING AN M5 WASHER UNDER THE RIVET HEAD AND AT THE END INSIDE THE ROOF CAP YOU WILL ENSURE A WATER PROOF FIX. IF FIXING WITH OPEN RIVETS APPLY SEALER TO RIVET HEAD.**
- 5 **WHEN FIXING THE CANOPY TO THE VEHICLE ROOF START WITH THE NEAR SIDE LONG STRIP, THEN THE FRONT, THEN THE REAR (REFER TO NOTE 9) AND LAST THE INSIDE STRIP WHERE THE SMALL PANEL OF MATERIAL IS FIXED BACK TOWARDS THE APERTURE FRAME. IF THERE IS ANY DANGER OF THIS TIE DOWN STRIP BEING TOO LONG THEN SHORTEN TO OBTAIN A COMFORTABLE TENSION. IT DOES NOT NEED TO BE TIGHT FIXING THE CANOPY TOO TIGHTLY WILL RESULT IN THE MATERIAL BEING TORN DURING LIFTING THE CAP.**
- Nearside = left
- 6 **AFTER THE CANOPY HAS BEEN FITTED DOWN TO THE VEHICLE ROOF PLACE A STRIP OF POLYURATHANE SEALER BETWEEN THE ALLOY STRIP AND THE VEHICLE ROOF DO NOT USE SILICON BASED SEALER**
- 7 **IF YOUR CANOPY GETS SOILED REMOVE MARKS WITH WHITE SPIRIT, WE HAVE FOUND THIS TO BE THE BEST. ANY SLIGHTLY OILY RESIDUE CAN BE REMOVED WITH SOAPY WATER. ALSO METAL POLISH DURAGLIT OR EVEN T CUT MAY BE USED - THIS ONLY APPLIES TO NON STRIPE CANOPIES. ALWAYS CLEAN GENTLY**

TO CLEAN THE OUTSIDE OF CANDY STRIPE CANOPIES ONLY USE SOAP AND WATER, BE CAREFULL DO NOT USE ANY SOLVENTS OR YOU

**18 PREMIER WAY, ABBEY PARK IND. ESTATE, ROMSEY, HAMPSHIRE.
SO51 9DQ**

Telephone 44(0) 1794 830831

e - mail: Dormobile@tiscali.co.uk

Fax 44(0) 1794 830839

Website: www.dormobile.co.uk

Registration No. 1391731

VAT No. 320 5672 82



MAY DAMAGE THE PRINTED STRIPES

- 9 WHEN FITTING THE TIE DOWN STRIPS TO THE VEHICLE ROOF YOU SHOULD FIND EXCESS MATERIAL ON ALL SIDES, WHEN YOU HAVE LOCATED THE STRIP IN THE CORRECT POSITION FROM THE OUTSIDE EDGE OF THE WASTE MATERIAL CUT INWARDS TOWARDS THE STRIP TO REDUCE TENSION IN THE MATERIAL.**

- 10 YOU MAY FIND THAT YOU NEED TO CUT UP THE SEAMS FROM THE BOTTOM EDGE WHEN FITTING THE TIE DOWN CORNERS. DO THIS WITH CARE.**

**18 PREMIER WAY, ABBEY PARK IND. ESTATE, ROMSEY, HAMPSHIRE.
SO51 9DQ**

Telephone 44(0) 1794 830831

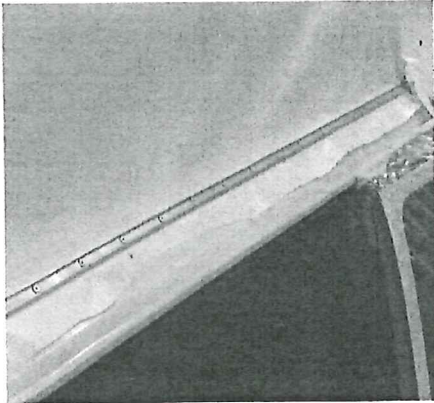
e - mail: Dormobile@tiscali.co.uk

Fax 44(0) 1794 830839

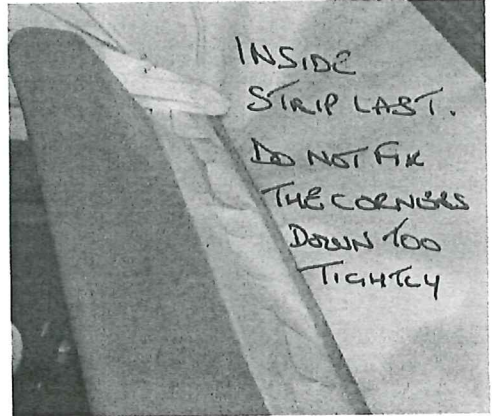
Website: www.dormobile.co.uk

Registration No. 1391731

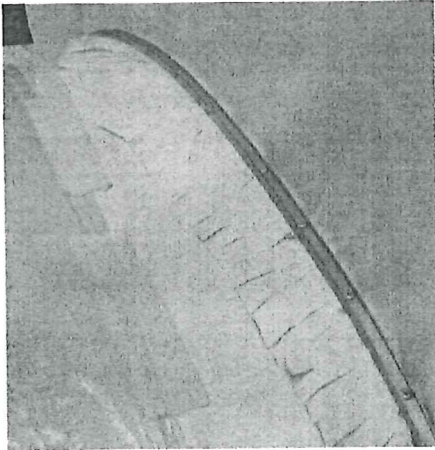
VAT No. 320 5672 82



N/SIDE STRIP FITTED FIRST.



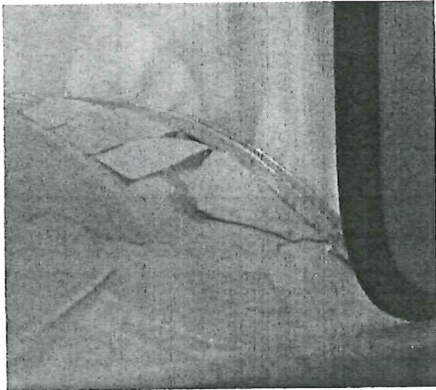
INSIDE STRIP LAST. DO NOT FIX THE CORNERS DOWN TOO TIGHTLY



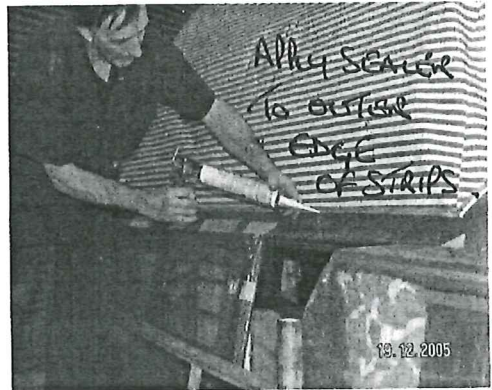
FRONT STRIP NEXT



ADJUST TOP CORNER + RIVET



REAR STRIP NEXT. TREAT THE SAME AS FRONT.



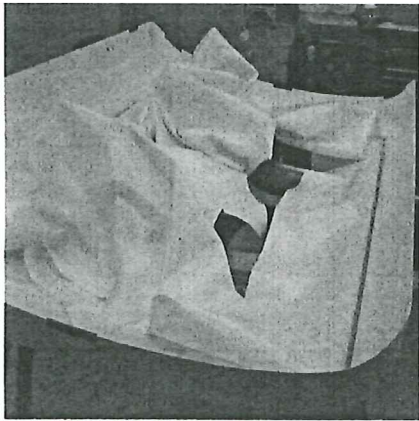
APPLY SEALER TO OUTER EDGE OF STRIPS.

19.12.2005

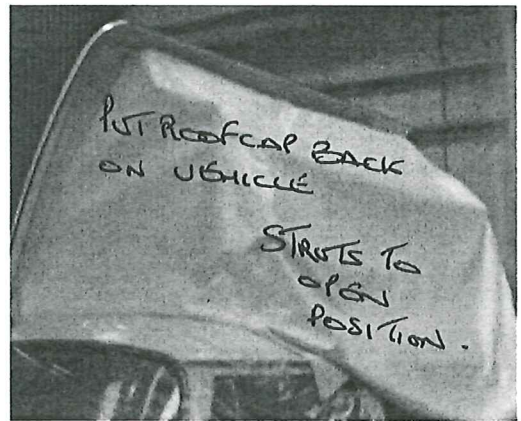
PHOTO'S HERE SHOW CANOPY FITTED TO VW LAND ROVER CANOPY FITTING IS JUST THE SAME.

①

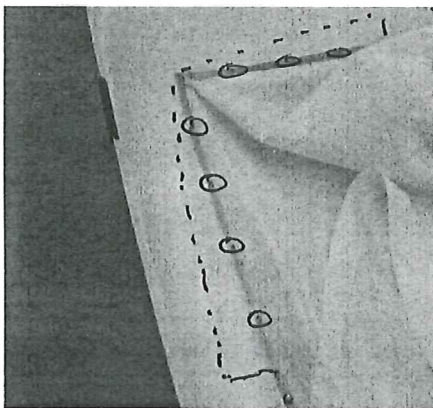
FITTING CANOPY PHOTO'S - USE WITH WRITTEN INSTRUCTIONS



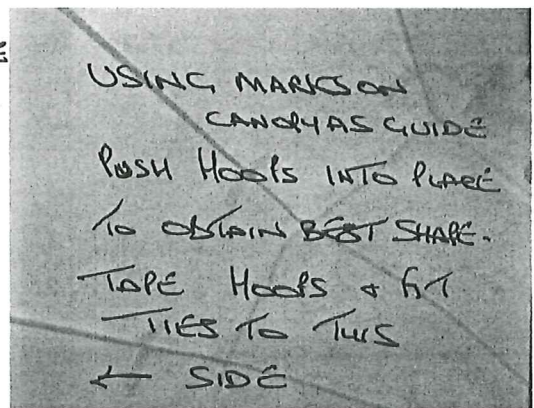
USING MARKS
ON CANOPY
FIT TO CORNERS
FIRST.
ALLOY STRIPS
ON TOP OF CANOPY
MATERIAL



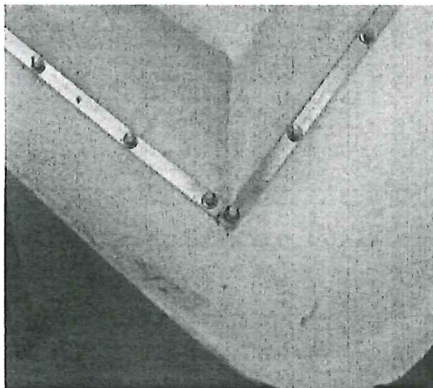
PUT ROOFCAP BACK
ON VEHICLE
STARTS TO
OPEN
POSITION.



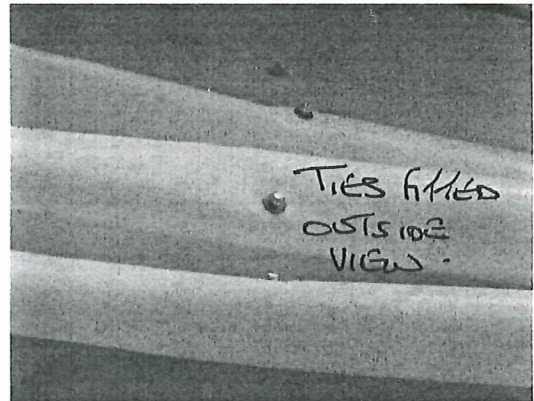
TOP CORNERS
OPPOSITE HINGE SIDE
FIXED WITH NUT & BOLTS
LEAVE ANY WASTE
EDGE
ADJUST CORNERS
LATER IF NEEDED.



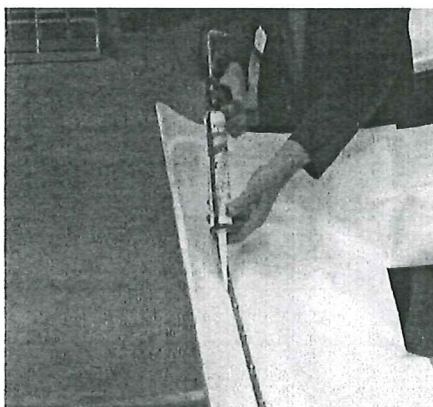
USING MARKS ON
CANOPY AS GUIDE
PUSH HOOKS INTO PLACE
TO OBTAIN BEST SHAPE.
TAPE HOOKS & FIT
TIES TO TUBS
← SIDE



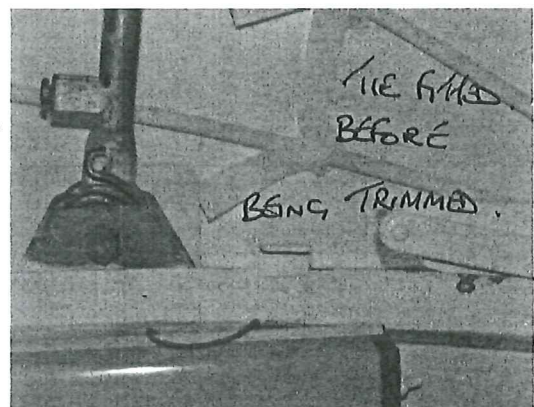
ALLOY STRIPS
RIVETED
WASTE TRIMMED
AWAY
(EXCEPT ABOVE)



TIES FITTED
OUTSIDE
VIEW.



SEAL OUTSIDE
EDGES OF STRIPS
WITH P. U. SEALER.



TIE FITTED
BEFORE
BEING TRIMMED.